



11A Debdale Lane , Smeeton Westerby, LE8 0QD Asking Price £525,000

Rose Cottage is a charming detached, white-painted period cottage, quietly positioned along the sought-after Debdale Lane in the picturesque village of Smeeton Westerby. Surrounded by open countryside and enjoying delightful rural views, the property offers immense character and scope for enhancement, making it an exciting opportunity for buyers seeking a quintessential country home.

The cottage benefits from gas central heating, off-road parking, a double/tandem garage, and a generous enclosed garden backing onto open countryside.

- Charming detached period cottage in a sought-after village location
- Quietly positioned on Debdale Lane, surrounded by open countryside
- Ground-floor shower room and first-floor family bathroom
- Double / tandem garage with off-road parking
- Enclosed, good-sized garden backing onto open countryside
- No Chain

Viewing

Please contact our Berkley Leicester Office on 0116 2544755 if you wish to arrange a viewing appointment for this property or require further information.



4



2



2



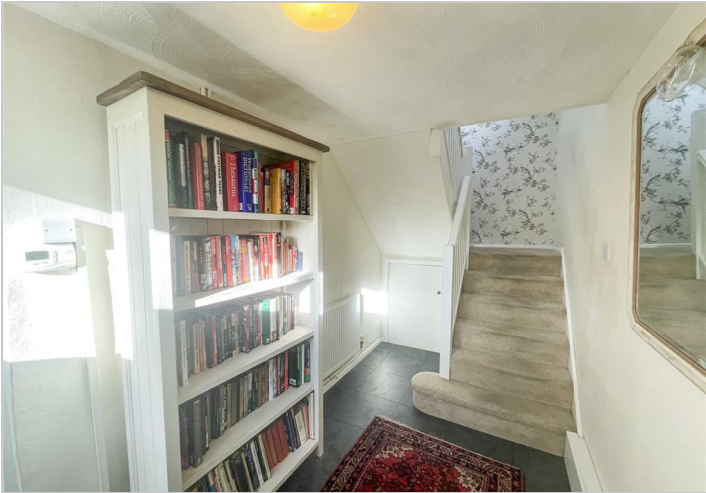
Floor Plan



Area Map



Energy Efficiency Graph



These particulars, whilst believed to be accurate are set out as a general outline only for guidance and do not constitute any part of an offer or contract. Intending purchasers should not rely on them as statements of representation of fact, but must satisfy themselves by inspection or otherwise as to their accuracy. No person in this firms employment has the authority to make or give any representation or warranty in respect of the property.